



Saint Elizabeth Community

Where RI seniors come first

News

WINTER 2021

Saint Elizabeth Community Advances Strategic Plan Announces Saint Elizabeth Manor to be Sold



The decision to sell Saint Elizabeth Manor in Bristol was announced in January by Saint Elizabeth Community President & CEO, Matthew R. Trimble and Board Chair, Craig W. Carpenter. A purchase and sales agreement was signed with Green Tree Healthcare Management, and an application was submitted to the Rhode Island Department of Health for the Change in Effective Control on February 9, 2021. It is anticipated that the sale will be finalized by early spring 2021.

“After a lengthy and careful consideration, and with the strategic plan of the overall organization in mind, the Board of Trustees unanimously approved the sale,” says

Trimble. “Although there is sadness in selling, this action further fortifies Saint Elizabeth Community and subsequently makes us very well positioned to move forward with the implementation of our exciting strategic initiatives. Serving RI seniors remains our top priority.” Trimble also announced that Beth Russell, Administrator, and Kathy Parker, Admissions Director, will remain as employees of Saint Elizabeth Community.

Saint Elizabeth Manor, a skilled nursing and rehabilitation center, has been a member of Saint Elizabeth Community since 1990. The strategic direction of the organization includes plans to expand its innovative home and community-based services, support staffing and ensure future growth within the remaining six entities.

Hope is Here! Vaccinations Have Begun!

With the administration of vaccines, the year began with hope for the elders in our care, for the front line staff, and for their families. This hope is a welcome respite from the stress that the pandemic has brought to all, but sadly it arrives after outbreaks brought loss at both residences.

After ten months of diligent caregiving, and just days shy of residents and staff receiving COVID vaccines, outbreaks of COVID-19 occurred at both Saint Elizabeth Manor and Saint Elizabeth Home. First doses of the vaccine were administered at Saint Elizabeth Manor the last week of December, and at Saint Elizabeth Home, the first week of January. “It was heartbreaking to have outbreaks just as vaccines were being administered,” says Matthew R. Trimble, Saint Elizabeth Community’s President and CEO. He continues, “We are saddened by the passing of those who succumbed to the virus. Our hearts go out to their families.”

Home care staff at Cathleen Naughton Assoc. began to be vaccinated in January, and our assisted living residents and staff received first doses of vaccines in January, and second doses in February. A vaccination schedule from the Rhode Island Department of Health (RIDOH) for adult day health staff and participants has not yet been announced. “We are so encouraged to see that our residents and front line staff are getting vaccinated,” says Trimble. He continues, “It is the welcome relief needed after a long and exhausting battle. We remain vigilant, following best practices of infection control from the RIDOH, and look forward to the year with hope.”



Lucy Sanchez, CMT, Saint Elizabeth Home



Dr. David Fried, Medical Director, Saint Elizabeth Home

 www.facebook.com/SaintElizabethCommunity

 [stelizcomm](https://www.instagram.com/stelizcomm)

www.stelizabethcommunity.org

Saint Elizabeth Community is a not for profit 501(c)(3), charitable organization

Dear Friends:

I hope your year is off to a good start! As vaccinations are administered, there is hope on the horizon and we look forward to brighter days! We have much work ahead in 2021, with many initiatives that will be coming to fruition in support of our strategic plan. It will be a year with change, amidst a continued focus on providing exceptional elder care that Rhode Islanders expect from Saint Elizabeth Community.

One major change announced is the selling of Saint Elizabeth Manor. After lengthy and serious deliberations, this decision was arrived at by the Board of Trustees and executive leadership team, and will help advance our strategic plan. We will certainly miss our Manor colleagues in our daily interactions, and wish for continued success as Green Tree takes the helm in Bristol. Beth Russell and Kathy Parker will remain with Saint Elizabeth Community. I look forward to their continued valued contributions.

Saint Elizabeth Community is managing through this pandemic, and like almost all providers of eldercare, we have faced challenges. Recent outbreaks on the cusp of the vaccinations being administered were heartbreaking. I strongly commend all the staff for their heroic work. It takes a committed team to manage the care day to day, and the teams at all our locations, as well as staff providing home care, have worked tirelessly to meet challenges brought forth by the COVID-19 virus.

As detailed in this newsletter, we have received numerous grants to support our organization, and ultimately those in our care. I am ever mindful of the incredible support both emotionally and financially to our residents, staff, and entire organization from many individuals and institutions.

Thank you all!

Sincerely,



Matthew R. Trimble
President & CEO



Blakely Promoted to Director of Social Services at Saint Elizabeth Home



Erin Blakely, BSW, has been promoted to Director of Social Services at Saint Elizabeth Home in East Greenwich, and will oversee social services provided to 168 individuals within five buildings, including Saint Elizabeth Home and four GREEN HOUSE® Homes. Employed by Saint Elizabeth Home as a social worker since 2015, Blakely worked for two years at Saint Elizabeth Home, and the past three and a half years at THE GREEN HOUSE® Homes at Saint Elizabeth Home. She earned her BSW at Rhode Island College in 2005, and resides in Smithfield with her husband and three children. Congratulations Erin!

Jenkins Joins Saint Elizabeth Community



Eileen Jenkins, R.N., CHPN, has joined Saint Elizabeth Community as the Certified Nursing Assistant (C.N.A.) Clinical Coordinator. She is a graduate of New England Baptist Hospital School of Nursing and Emmanuel College. She previously worked at VNA Care Network, MA, as a Hospice Educator, and most recently held the role of Clinical Coordinator for the C.N.A. Program at Crossroads RI. Eileen and her husband reside in Warwick. Candidates interested in becoming a C.N.A. can email Eileen at ejenkins@stelizabethcommunity.org. Welcome Eileen!



SEC In Our Community



Cornerstone- Apponaug Center participants proudly display their handkerchief art! I-r top row: Cheryl Archetto; Allyssa Caetano, Nursing Assistant; and Pauline Case. Front center: Ginny Skodross.

Our Mission... to provide exceptional, compassionate care in an array of settings. We embrace the needs of each individual in an environment where those we care for, and work with, are treated **just like family.**



Barbara Romani, Manor resident, received holiday gifts from the "Heart to Heart from Six Feet Apart" program sponsored by the students at the Raymond Laperche Elementary School.



Raymond Vincent delightfully plays with the kittens during an exercise class at Saint Elizabeth Court



100th Birthday Celebration for Phyllis Franklin at Saint Elizabeth Home!

■ SAINT ELIZABETH HOME
Short term rehab and long term care

■ SAINT ELIZABETH COURT
Affordable assisted living

■ CORNERSTONE ADULT SERVICES, INC.
CORNERSTONE ADULT SERVICES, INC.
Adult day centers
Adult day centers



SEC

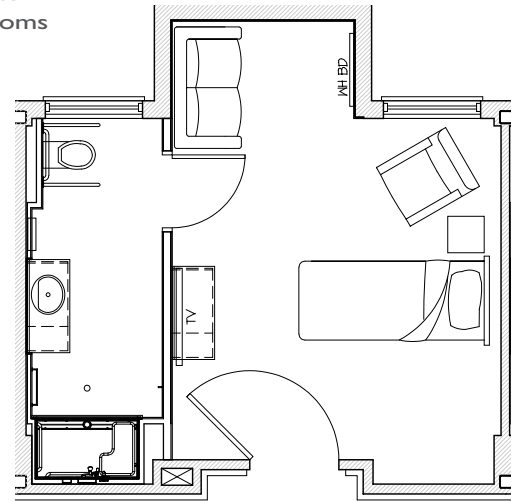
Meeting Needs

Saint Elizabeth Home Awarded \$1 Million Grant *Six rooms will be converted from semi-private to private suites*

Saint Elizabeth Home was recently awarded a one million dollar grant from the State of Rhode Island's Nursing Facility Transformation Program to convert six shared rooms into private suites.

"We are thrilled to receive this grant and grateful to the State of Rhode Island for making this project possible," begins Matthew R. Trimble, President and CEO. "Our customers often request private rooms, and increasing our ability to meet this need is important. This will also support residents at end of life, offering privacy and comfort to these individuals and their family. As we have faced the pandemic, we have also seen the benefit of having space to isolate an individual. By converting shared rooms into private suites, Saint Elizabeth Home will have the ability to more effectively meet the needs of our elders, families and staff."

"Construction is scheduled to start in the first quarter of 2021," begins Tom Radican, Saint Elizabeth Community Facilities Engineer. "We are working very closely with DBVM Architects and Case Construction to ensure a quick, safe construction process including a private entrance and isolated areas for workers. We look forward to the project being complete and open for care in Spring 2021."



Saint Elizabeth Place Residents Benefit from Grants Awarded to CareLink and Rhode Island College *Technology supports donated*

Telehealth has evolved throughout the pandemic and members of Saint Elizabeth Community have been fortunate to receive the tools needed to excel. Saint Elizabeth Place residents, many of whom are enrolled in the Support and Services at Home (SASH) Program, were awarded 38 tablets and 20 cell phones from CareLink, along with services provided by Rhode Island College made possible by a grant from the Rhode Island Foundation's Covid-19 Behavioral Health Fund. With the use of the technological equipment and tech support, residents have access to telehealth services and social activities in response to the impacts of Covid-19.

Identifying and evaluating the immediate needs of their residents, this platform helps support the staff at Saint Elizabeth Place to avoid unnecessary hospitalizations. "Through these grants, Saint Elizabeth Place and the SASH program are able to assist with the effects of Covid-19 on our residents. Responding to their needs with the use of technology, temporary interns, and behavioral health professionals, we can reduce their stress and isolation," exclaims Barbara Gavin, Director of the SASH program.

Remaining safely in their homes is important during these unprecedented times, and the devices allow for effective communication for a proactive approach. Additional benefits of the grant are the creation of monthly newsletters on healthy aging, daily calendars, wellness coaching, and access to virtual community resources.

Thank you to the Rhode Island Foundation, CareLink, Rhode Island College, and Cathleen Naughton Associates for the collaboration while helping to provide exceptional person centered care.



Saint Elizabeth Place resident, Diego Albizu, communicates with a member of his church on a donated tablet.



A Spirit of Philanthropy Felt from Afar



Elaine Mastracchio, Friends Treasurer, draws the first winning ticket for this year's 20-Week Club.

For decades, the Friends of Saint Elizabeth Home have been dedicated to providing support to the residents of Saint Elizabeth Home. This committed group of former family members and friends could often be found in the coffee shop, assisting in activities, helping with meals or planning fundraising events. When COVID-19 forced visitation restrictions, the Friends could no longer be present in the Home, but that hasn't stopped this amazing group from sharing their spirit.

"I have been visiting the Home three to five days a week for many years," begins Rudy DiPippo, Friends President. "My work with the residents has been such an important part of my life and daily routine that when we had to stop in March, I immediately missed the residents and staff who have become like my family. Although we couldn't physically be in the building, I knew the Friends needed to help in any way we could."

This support came in the form of donations totaling \$14,000 to provide the Home the resources needed to help fight COVID-19. Members have donated to the food drive, the hygiene drive and even helped sew cuffs on 200 PPE gowns. The Friends also continued to fundraise from afar with their annual 20-Week Club Raffle which raises funds to support resident activities. "We are so grateful to the Friends for their continued support," begins Marianne Wolcott, Saint Elizabeth Home Administrator. "We really have missed them so much during this past year. I look forward to the day that we can have these amazing volunteers, along with our families, back in the building sharing their support and friendship with our residents."

"Although we couldn't physically be in the building, I knew the Friends needed to help in any way we could."

- Rudy DiPippo, Friends President

RIHEBC Grant to Spark Telehealth Program

Cathleen Naughton Associates was recently awarded a grant from the Rhode Island Health and Education Building Corporation. The \$9,600 award will allow Saint Elizabeth Community's home care service to launch a telehealth program to provide our most at risk elders with access to care, and includes monitoring vital signs such as blood pressure, oxygen level, weight and temperature.

"The COVID-19 crisis has accelerated our plan to introduce telehealth into the array of services offered to the seniors we serve," says Caroline Rumowicz, Director of Cathleen Naughton Associates. "This health crisis has demonstrated nationwide how impactful connecting health providers with patients virtually can be. We are grateful to RIHEBC for helping make this important program possible."



**Your gift to Saint Elizabeth Community makes our work possible.
Thank You!**

Saint Elizabeth Home Receives Real Jobs RI Grant

Congratulations to the employees participating in the Advanced Training Program:

CNAs

Adenike Adelekan
 Maria Baptista
 Alyssa Gould
 Darvassy Kingvilay
 David Koutsogiane
 Karinne Medeiros
 Katelyn Morrison

Mentors

Bill Carlson
 Jess Cutler
 Lucy Sanchez

Through a grant from Real Jobs Rhode Island, (RI Department of Labor and Training), an Advanced Certified Nursing Assistant (CNA) training course began on Dec. 30 at Saint Elizabeth Home. The purpose of this program is to build a career path, and a mentoring training program for CNAs, introducing career opportunities within our organization.

Eight CNAs were selected to participate in the Advanced CNA program. The program includes four training modules and three virtual 2 hour modules are taught by Rhode Island College (RIC) professors. There are four hours of Customer Service education, four hours of Behavioral Health education, and eight hours of Advanced Dementia Care education.

Additionally, participants in the Advanced CNA Training have access to a Navigators Program which was created to remove obstacles so that people can work without unnecessary stress. This program offers financial support, job coaching, and career advice throughout the program.

**FREE Coming Soon...
 CNA Training Program**
 Certified Nursing Assistant Training Program
 will be underway soon.

If you know a potential candidate for this program please email Eileen Jenkins at: ejenkins@stelizabethcommunity.org



Cornerstone Adult Services
Just like family

Adult day health centers

COVID-19 Vaccination Dates Have Been Scheduled for Cornerstone Day Center Participants

- Nursing care
- Restorative therapy
- Engaging programs and activities
- Nutritional meals and snacks
- Following RIDOH guidelines:
 screening prior to entrance, social distancing and mask wearing

Bristol Center
 254-9629

Apponaug Center
 739-2847

Memory Care Center - Warwick
 739-2844

Member Saint Elizabeth Community

SAINT ELIZABETH COMMUNITY Board of Trustees

Officers:

Chair:
 Craig W. Carpenter

Vice Chair:
 Steven W. Tilley

Secretary:
 Steven H. Kitchin

Treasurer:
 Claire C. Flaherty

Corporate Counsel:
 Jeffrey W. Kasle

Trustees:
 Richard Crellin
 Kristen DiSanto
 Robin Dziuba
 Lisa Holley
 Peter Hollmann, M.D.
 Rt. Reverend W. Nicholas Knisely
 E. Paul Larrat, Ph.D., R.Ph.
 Timothy Murray, CPA, CVA
 Robert H. Pease, Jr.
 Wayne D. Pelland
 Kimberley Ranalli
 Philip C. Slocum
 Judy W. Vigar

Matthew R. Trimble, CNHA
President & CEO
 Saint Elizabeth Community

Administrative Staff Saint Elizabeth Community

Matthew R. Trimble, CNHA
President & CEO

Erica Bryson, CFRE
Chief Philanthropy Officer

Maggie Connelly, LALA
Administrator
 Saint Elizabeth Court

Ken Coté
Administrator
 Saint Elizabeth Place | Saint Elizabeth Terrace

Jessica Gosselin, MS
Director
 Cornerstone Adult Services, Inc.

Mark J. Loiselle, CPA, CGMA
Chief Financial Officer

Christine L. McGuire, CPA
Director of Finance

Roberta B. Merkle, Esq.
Executive Vice President, Strategic Initiatives

Kathleen Parker
Director of Admissions

Tom Radican
Facilities Engineer

Mary C. Rossetti
Director of Marketing and Communications

Caroline Naughton Rumowicz
Director
 Cathleen Naughton Associates

Elizabeth I. Russell
Administrator
 Saint Elizabeth Manor

Donna Shirley
Director of Human Resources

Marianne Wolcott, LNHA
Administrator
 Saint Elizabeth Home

If you do not want to receive direct mail solicitations from Saint Elizabeth Community, please write to us at 2364 Post Road, Suite 100, Warwick, RI 02886 or email ypierce@stelizabethcommunity.org